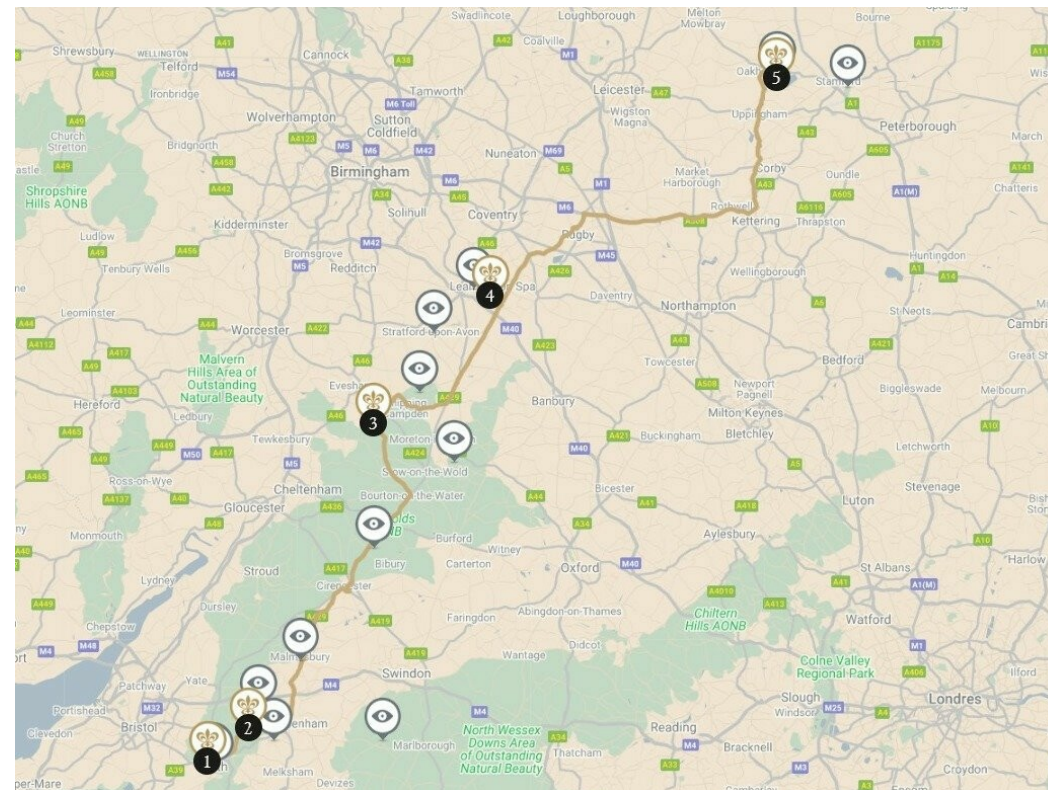


United Kingdom



ROUTES DU BONHEUR From ancient Roman Baths, the Cotswolds on to the nature reserve of the Hambleton Peninsula - a journey of natural beauty

From charming cottages with thatched roofs to idyllic gardens, stately homes and immense mansions, as well as small winding roads through unspoiled landscapes, the English countryside is charmingly beautiful. From the Roman city of Bath to Yorkshire in the North, this route is full of historic sites and pretty villages where time seems to stand still.

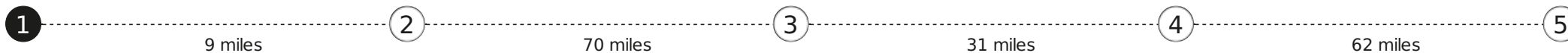


5 NIGHTS
from
US\$ 1,852.33*

A concierge is at your service:
+1 800 735 2478 *

* Prix Total communiqué à titre indicatif au 05/11/2024, calculé sur la base de 2 personnes en chambre double pour un séjour du nombre de nuits indiqué sur cette page par établissement, hors activités conseillées, hors établissements non réservables en ligne et hors restaurants.

** Prix d'un appel local.



1 BATH — 1 NIGHT

(1 property available)

The Bath Priory

Hotel and restaurant in town. Ivy climbs up the Georgian sandstone of The Bath Priory, a charming manor built in 1835, nestled in the gardens of a former priory. Lilac, heather and hyacinth are among the lovely flowers given to the rooms whose decor offer a splendid blend of modern fabrics and antique furniture. Sheltered by low walls, the herb garden is just a hint of the delicious aromas you will soon savour. Crossing Royal Victoria Park, you are only steps from the historic centre of Bath, where you can stroll among Georgian architecture and visit the Roman baths. But the most beautiful bath awaits your return at The Garden Spa by L'Occitane. Afternoon tea is served in the lounge decorated with paintings and works of art.

Weekly closing :

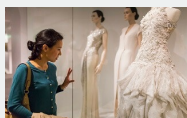
Hotel/"The Pantry": Monday and Tuesday. Main Restaurant: lunch from Monday to Friday, Monday evening, Tuesday evening.



Member Relais & Châteaux since 2011
Weston Road
BA1 2XT, Bath
(Somerset)

Close to the property

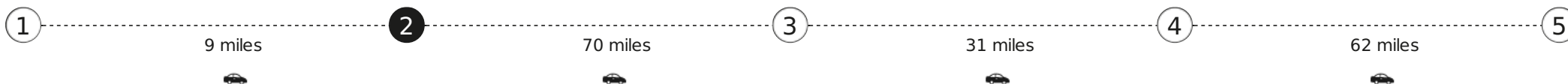
- Roman Baths and Circus, Bath
- Crinolines of the Fashion Museum, Bath



A concierge is at your service:

+1 800 735 2478 *

*Price of a local call



2 COLERNE-NEAR BATH — 1 NIGHT

(1 property available)

Lucknam Park Hotel & Spa

Hotel and restaurant in the country. Lucknam Park — the very name conjures images of trees and stately nature. This country retreat boasts sumptuous guest rooms and outstanding cuisine, to be savoured in the grand atmosphere of Michelin- starred Restaurant Hywel Jones or in the contemporary Brasserie. Luxuriate at the award-winning spa, enjoy horse riding on the 200 hectares of parkland covering the estate or simply enjoy the gardens and the magnificent avenue of 400 lime and beech trees planted in 1827. If you wish to venture out of this retreat, the lovely city of Bath is just 15 kilometres away.

Weekly closing :

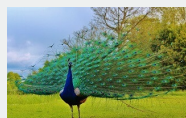
The whole hotel will be closed for annual refurbishment together with both restaurants from 4th until 17th January 2024. During that time, our Cottages will be available on fully self-catering basis. The Spa will be closed from 4th until 31st January 2024 for annual refurbishment. The Brasserie will be closed for full refurbishment and extension from 4th January until 28th March 2024. Dates are subject to change. Main Restaurant « Restaurant Hywel Jones by Lucknam Park »: dinner from Sunday to Tuesday.



Member Relais & Châteaux since 2001
 Lucknam Park
 SN14 8AZ, Colerne near Bath
 (Chippenham, Wiltshire)

Close to the property

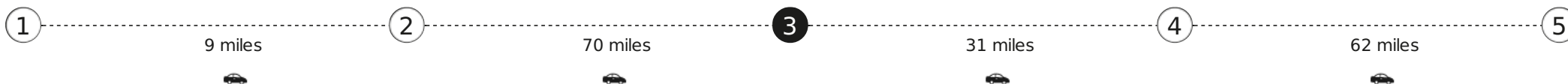
- Corsham Court, Wiltshire
- Discover the monoliths of Avebury
- Castle Combe



A concierge is at your service:

+1 800 735 2478 *

*Price of a local call



3 BUCKLAND NEAR BROADWAY — 1 NIGHT

(1 property available)

Buckland Manor

Hotel and restaurant in a village. Nestled amid beautiful gardens, Buckland Manor is one of the finest manor houses in the Cotswolds and a unique retreat for peace and reflection. If not relaxing in the surroundings of timeless beauty and elegance, where crackling log fires warm the cosy lounges, you can always burn up some energy on the tennis court or try your hand at horse riding, hunting and hiking into the vicinity area. Savour top hospitality, fine wines and exquisite food — be it a sumptuous dinner or a light al fresco lunch — amid glorious vistas where the sun falls on honeyed stone. With its air of classic English charm, Buckland Manor offers an idyllic spot for a few days away or an exclusive event.



Member Relais & Châteaux since 1995
Buckland Manor
WR12 7LY, Buckland near Broadway
(Worcestershire)

Close to the property

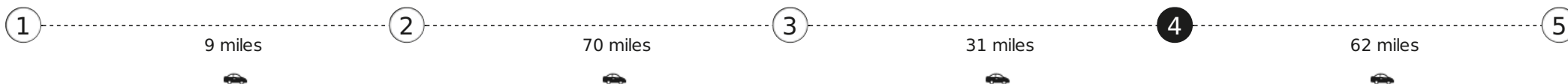
- The tradition of Chastleton House
- The garden “rooms” of Hidcote Manor



A concierge is at your service:

+1 800 735 2478 *

*Price of a local call



4 LEAMINGTON SPA — 1 NIGHT

(1 property available)

Mallory Court Country House Hotel & Spa

Hotel and restaurant in the country. On the doorstep of Warwick Castle, a mere 10 minutes away from the house where William Shakespeare was born, in Stratford-upon-Avon, Mallory Court stands like a midsummer night's dream. With understated beauty and a dedicated staff, this country manor house cultivates British elegance down to the slightest detail, from the perfectly tended lawns to the organic herb garden and traditional herbaceous borders. Elan Spa is an ideal place to rejuvenate yourself. Opened in early 2017, it sits in a sheltered wooded area. Screened from the hotel by trees, on the far side of Mallory's rose gardens, the spa provides a natural, secluded setting for relaxation. With the Cotswolds also within easy reach, Mallory Court is the perfect base from which to explore this designated area of natural beauty.

Weekly closing :

Main Restaurant: lunch. "The Orchard house café": dinner from Friday to Sunday.



Member Relais & Châteaux since 1983
Harbury Lane
Bishops Tachbrook
CV33 9QB, Leamington Spa
(Warwickshire)

Close to the property

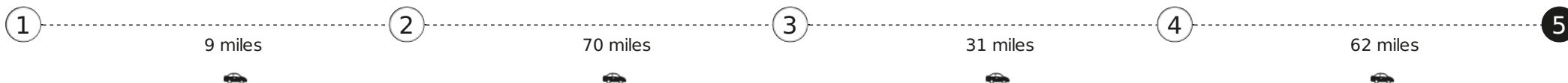
- Warwick Castle



A concierge is at your service:

+1 800 735 2478 *

*Price of a local call



5 OAKHAM — 1 NIGHT

(1 property available)

Hambleton Hall

Hotel and restaurant on a lake. A Victorian house elegantly converted into a prestigious hotel, Hambleton Hall is hidden away in Rutland, in the heart of the Midlands. England's smallest county is also home to the largest artificial lake in Europe. It is a geographical detail further enhancing the seductive powers of this hotel, which is perched on a hill overlooking the water. You will appreciate the incomparable hospitality of Tim and Stefa Hart and succumb to the charms of the sumptuous interior decor and the cuisine that is quite simply unique. When departing this magnificent setting, you will have only one thing in mind: to return as soon as possible for another interlude of calm and well-being.



Member Relais & Châteaux since 1984
Hambleton Hall
Oakham
LE15 8TH, Rutland

Close to the property

- Discover Burghley House, Peterborough
- Birdwatching on Rutland Water



A concierge is at your service:

+1 800 735 2478 *

*Price of a local call