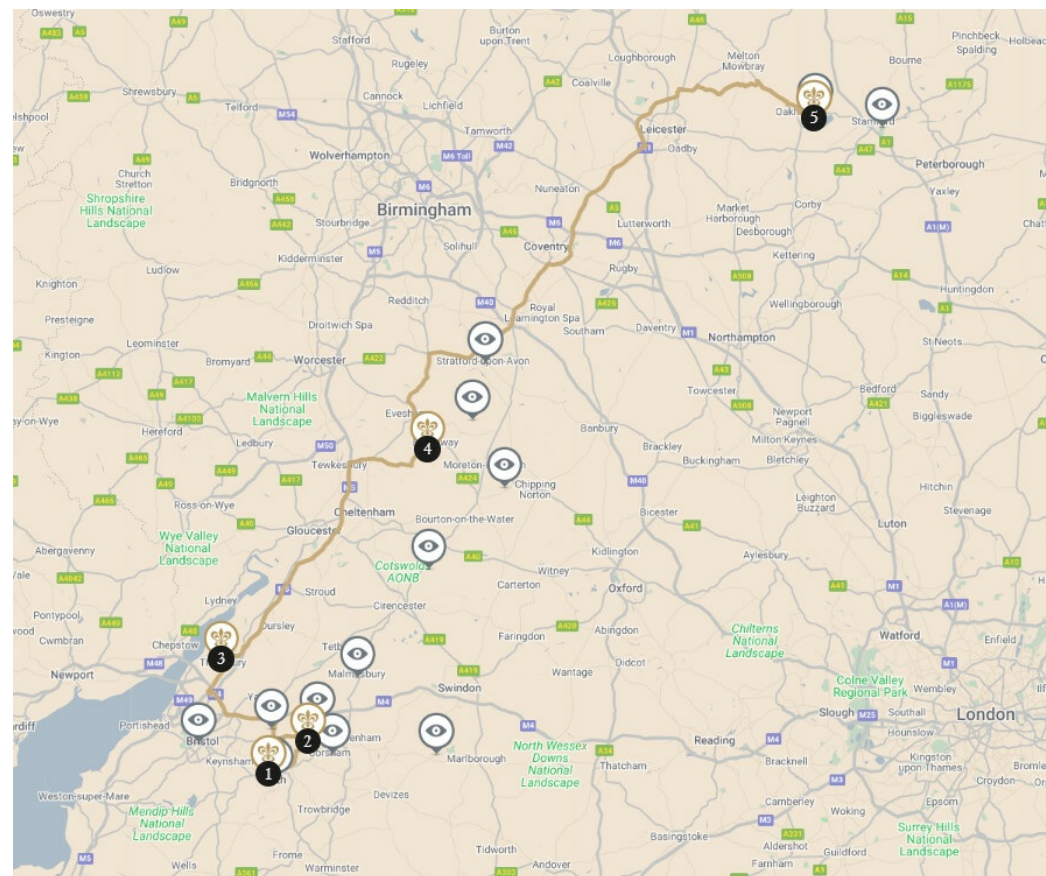


United Kingdom



**ROUTES DU BONHEUR** From ancient Roman Baths, the Cotswolds on to the nature reserve of the Hambleton Peninsula - a journey of natural beauty

From charming cottages with thatched roofs to idyllic gardens, stately homes and immense mansions, as well as small winding roads through unspoiled landscapes, the English countryside is charmingly beautiful. From the Roman city of Bath to Yorkshire in the North, this route is full of historic sites and pretty villages where time seems to stand still.



**5 NIGHTS**  
from  
**US\$ 1,947.06\***

A concierge is at your service:  
**+1 800 735 2478 \***

\* Total price provided for illustrative purposes only, on 09/01/2025, calculated on the basis of two people sharing a double room for stays of a duration indicated on this page, per establishment, excluding recommended activities, properties that cannot be booked online and restaurants.

\*\* Price of a local call.

1

9 miles



2

29 miles



3

48 miles



4

95 miles



5

**1 BATH — 1 NIGHT**

( 1 property available )

## The Bath Priory

**Hotel and restaurant in town.** Ivy-clad and golden-hued, The Bath Priory is a refined country house hotel nestled in four acres of tranquil grounds, just moments from the cultural treasures of Bath. Built in 1835 and steeped in Georgian charm, the former priory exudes warmth and elegance. Each room is named after a flower—Lilac, Heather, Hyacinth—and thoughtfully styled with a blend of antique furnishings and contemporary fabrics. Set discreetly behind a tree-lined residential street, it offers the rare experience of peaceful seclusion in a UNESCO World Heritage city. Sheltered by stone walls, the fragrant herb garden hints at the culinary delights to come, while the Garden Spa by L'OCCITANE promises the most restorative of returns. After a day exploring Roman baths and Georgian streets, indulge in afternoon tea among curated artworks in the lounge or unwind in a sanctuary where calm, culture, and comfort converge.

### Weekly closing :

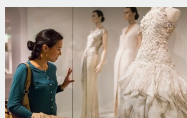
Hotel/"The Pantry": Monday and Tuesday. Main Restaurant: lunch from Monday to Friday, Monday evening, Tuesday evening.



Member Relais & Châteaux since 2011  
 Weston Road  
 BA1 2XT, Bath  
 (Somerset)

### Close to the property

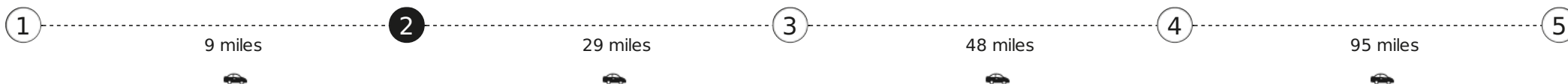
- Roman Baths and Circus, Bath
- Crinolines of the Fashion Museum, Bath



**A concierge is at your service:**

**+1 800 735 2478 \***

\*Price of a local call



**2 COLERNE-NEAR BATH — 1 NIGHT**

( 1 property available )

## Lucknam Park Hotel & Spa

**Hotel and restaurant in the country.** Lucknam Park — the very name conjures images of trees and stately nature. This country retreat boasts sumptuous guest rooms and outstanding cuisine, to be savoured in the grand atmosphere of Michelin- starred Restaurant Hywel Jones or in the contemporary Walled Garden Restaurant. Luxuriate at the award-winning spa, enjoy horse riding on the 200 hectares of parkland covering the estate or simply enjoy the gardens and the magnificent avenue of 400 lime and beech trees planted in 1827. If you wish to venture out of this retreat, the lovely city of Bath is just 15 kilometres away.

### Weekly closing :

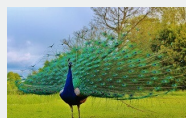
The whole hotel will be closed for annual refurbishment together with both restaurants from 4th until 17th January 2024. During that time, our Cottages will be available on fully self-catering basis. The Spa will be closed from 4th until 31st January 2024 for annual refurbishment. The Brasserie will be closed for full refurbishment and extension from 4th January until 28th March 2024. Dates are subject to change. Main Restaurant « Restaurant Hywel Jones by Lucknam Park »: dinner from Sunday to Tuesday.



Member Relais & Châteaux since 2001  
 Lucknam Park  
 SN14 8AZ, Colerne near Bath  
 (Chippenham, Wiltshire)

### Close to the property

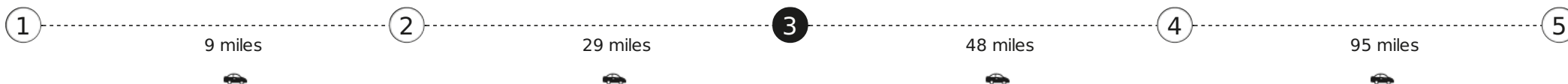
- Corsham Court, Wiltshire
- Discover the monoliths of Avebury
- Castle Combe



**A concierge is at your service:**

**+1 800 735 2478 \***

\*Price of a local call



**3 THORNBURY — 1 NIGHT**

( 1 property available )

## Thornbury Castle

**Hotel and restaurant in the country.** With its aura of spectacular otherworldliness, Thornbury Castle stands proudly in the county of Gloucestershire, near Bristol, England. Sumptuously set within 15-acre grounds, the 16th-century Tudor architecture and historic charm of this exceptional hotel are embodied not only in its stone walls but also in its majestic interiors, as evidenced by its spacious rooms and suites. Remarkably peaceful, the hotel provides the perfect tableau to the lush countryside of the Severn Valley. It encapsulates the best of castle life, with days spent relaxing in front of the fire, being pampered in the spa treatment room, enjoying royal afternoon tea, basking in idle contemplation accompanied by spectacular views over the enclosed gardens and indulging in the many activities nearby. It is an enchanting setting, that can be savoured in the four dining rooms of Thornbury Castle's gourmet restaurant, where the focus is on creative cuisine that celebrates the essentials. Chef David Williams brilliantly blends garden vegetables and produce from local farmers, offering both traditional and vegetarian menus that will delight the most discerning of connoisseurs.

### Weekly closing :

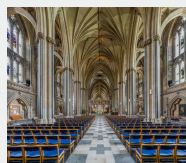
Hotel: open every day. Restaurant: lunch, except Sunday (on reservation).



Member Relais & Châteaux since 2021  
 Thornbury Castle  
 Castle Street  
 BS351HH, Thornbury

### Close to the property

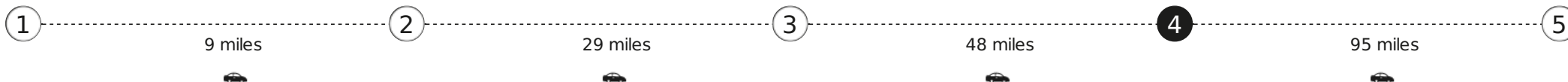
- Explore Bristol Cathedral



**A concierge is at your service:**

**+1 800 735 2478 \***

\*Price of a local call



**4 BUCKLAND NEAR BROADWAY — 1 NIGHT**

( 1 property available )

## Buckland Manor

**Hotel and restaurant in a village.** Tucked beneath the Cotswold escarpment and surrounded by ten acres of enchanting gardens, Buckland Manor is a 13th-century retreat steeped in charm, heritage, and timeless English beauty. Once a cherished family home, its mullioned windows, crackling fireplaces, and timeworn Cotswold stone whisper stories of centuries past. Guests are invited to unwind in light-filled lounges, stroll croquet lawns and wildflower meadows, or explore the rolling countryside beyond. Dining is a celebration of seasonal, locally sourced produce—served with elegance in the manor’s candlelit dining room or al fresco beneath rose-clad walls. With golden stone vistas, peaceful seclusion, and heartfelt hospitality, Buckland Manor offers a rare escape into stillness, romance and classic Cotswold allure.



Member Relais & Châteaux since 1995  
Buckland Manor  
WR12 7LY, Buckland near Broadway  
(Worcestershire)

### Close to the property

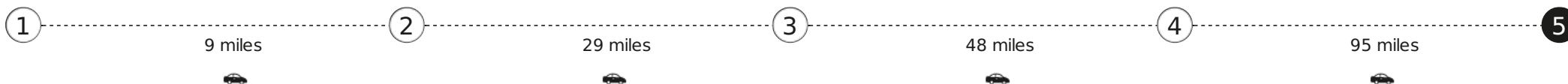
- The tradition of Chastleton House
- The garden “rooms” of Hidcote Manor



**A concierge is at your service:**

**+1 800 735 2478 \***

\*Price of a local call



**5** OAKHAM — 1 NIGHT

( 1 property available )

## Hambleton Hall

**Hotel and restaurant on a lake.** A Victorian house elegantly converted into a prestigious hotel, Hambleton Hall is hidden away in Rutland, in the heart of the Midlands. England's smallest county is also home to the largest artificial lake in Europe. It is a geographical detail further enhancing the seductive powers of this hotel, which is perched on a hill overlooking the water. You will appreciate the incomparable hospitality of Tim and Stefa Hart and succumb to the charms of the sumptuous interior decor and the cuisine that is quite simply unique. When departing this magnificent setting, you will have only one thing in mind: to return as soon as possible for another interlude of calm and well-being.



Member Relais & Châteaux since 1984  
Hambleton Hall  
LE15 8TH, Oakham

### Close to the property

- Discover Burghley House, Peterborough
- Birdwatching on Rutland Water



**A concierge is at your service:**

**+1 800 735 2478 \***

\*Price of a local call