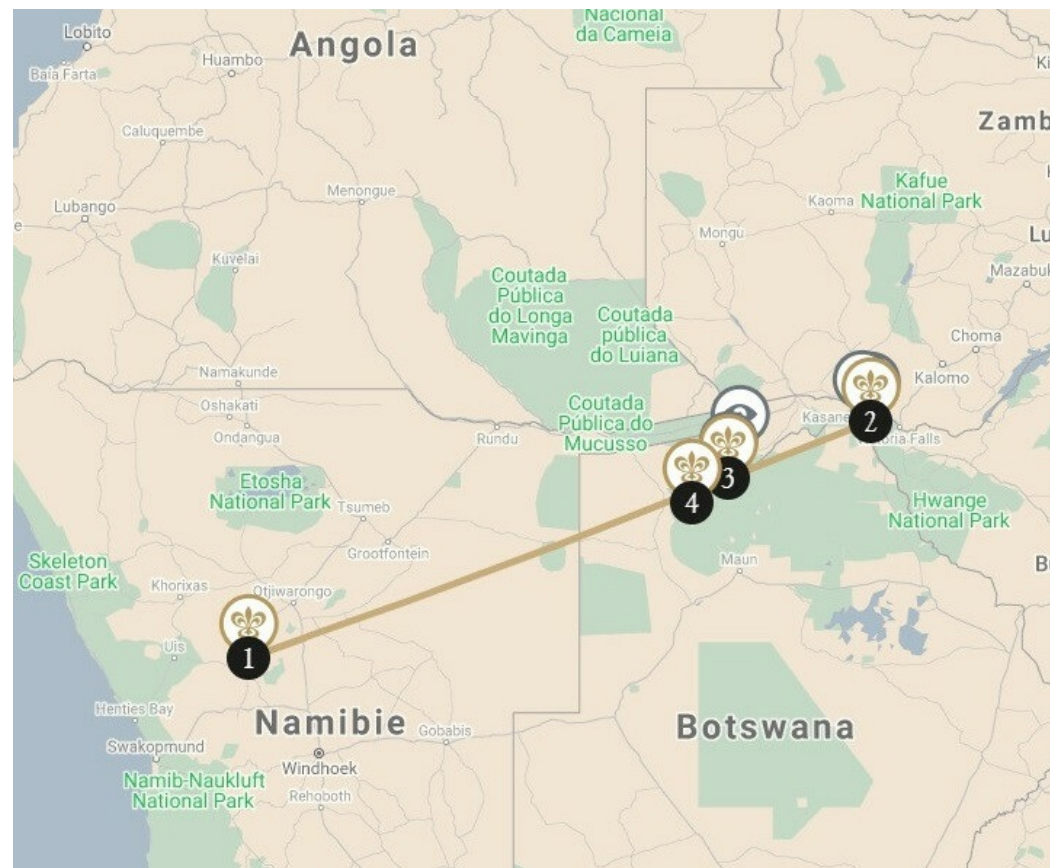


Zambia, Botswana, Namibia



ROUTES DU BONHEUR Desert Journey - from Namibia to Botswana, Victoria Falls and wildlife reserves

Your journey starts in Namibia and where the Namib Desert meets the rugged Damaraland mountains and valleys. Continue to Livingstone, Victoria Falls and kaleidoscopic views of the Zambezi River. Final stop Botswana - the Selinda Reserve, renowned for excellent leopard and wild dog populations, as well as some of the highest concentrations of elephant and buffalo in Africa. And into the heart of the Okavango's life-giving, watery environment, your private network of islands, called Duba.



12 NIGHTS
PRICE ON REQUEST*

A concierge is at your service:
+1 800 735 2478 *

* Prix Total communiqué à titre indicatif au 05/10/2024, calculé sur la base de 2 personnes en chambre double pour un séjour du nombre de nuits indiqué sur cette page par établissement, hors activités conseillées, hors établissements non réservables en ligne et hors restaurants.

** Prix d'un appel local.

1

9 hours



2

6 hours



3

1,5 hours



4

1 OMARURU - NAMIBIA — 4 NIGHTS

(1 property available)

Epako Safari Lodge & Spa

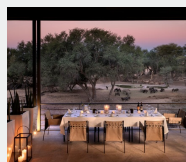
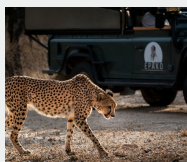
Lodge and restaurant in a game reserve. At the foot of the fiery red cliffs of the Erongo Mountains in Namibia, Epako Safari Lodge & Spa stands in the middle of an 11,000-hectare private reserve where over 2,000 animals and birds live. An exclusive lodge surrounded by beautifully manicured lawns — precursors to the sophisticated comfort that awaits inside — Epako includes watering holes where rhinos, giraffes, oryx, kudus, elands and sometime even cheetahs and leopards come to quench their thirst. Relish the chance to take in this moving sight from the terrace, as you enjoy a refined dinner and for those seeking a more active adventure, the certified guides will gladly take you with them on an unforgettable sundowner aperitif overlooking the Epako mountain range.



Member Relais & Châteaux since 2019
22nd Km Omaruru-Otjiwarongo road
Omaruru district
9000, Omaruru
(Erongo)

Close to the property

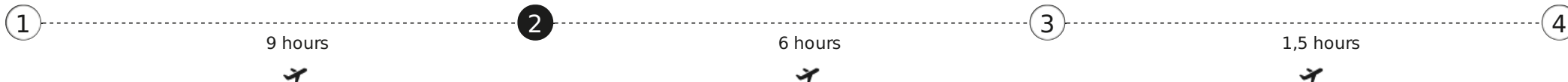
- Diner-Show
- Wildlife sanctuary



A concierge is at your service:

+1 800 735 2478 *

*Price of a local call



2 LIVINGSTONE - ZAMBIA — 2 NIGHTS

(1 property available)

Royal Chundu – Luxury Zambezi Lodges

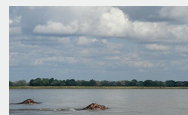
Lodge and restaurant on a river. Upstream from the Victoria Falls, on the banks of the powerful Zambezi River, you find paradise on earth. Royal Chundu, with its two magnificent lodges in the middle of the bush far from the madding crowd, is the place to enjoy peace and quiet in what remains as an untamed corner of the earth. The River Lodge is on the riverbank while the Island Lodge is located on an island, both offering spacious suites with a colonial décor reminiscent of the splendour of the times of the early explorers. Returning from their excursions, guests can sample divine spa treatments with natural African ingredients or enjoy Zambian cuisine, watching stars light up the sky over the river.



Member Relais & Châteaux since 2013
Plot 9003
Nakatindi Road
Katombora
Livingstone
(Katombora)

Close to the property

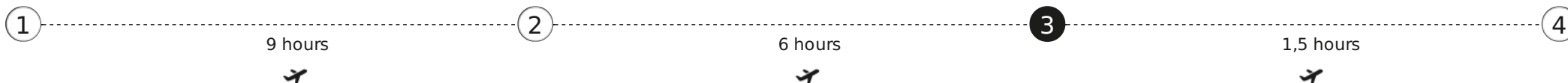
- The Zambezi by canoe
- The Vertigo of Victoria Falls



A concierge is at your service:

+1 800 735 2478 *

*Price of a local call



3 SELINDA RESERVE - BOTSWANA — 3 NIGHTS

(1 property available)

Great Plains Selinda

Lodge and restaurant in a private game reserve. Extending over 32,000 acres and linking the Okavango Delta to the Linyanti and Savute river systems, the private Selinda Reserve embodies Africa's true spirit and, more specifically, that of Botswana. Located within this remote wilderness are Great Plains Conservation's Selinda and Zarafa. Designed in an ecologically friendly manner, Zarafa Camp consists of large, sumptuously appointed tents, recreating the atmosphere of the very first safaris in their traditional style. Selinda Camp brilliantly synthesises the meeting of cultures thanks to its luxurious suites. In this exciting region, you will be able to appreciate the countless wonders of Botswana's wildlife; it's a veritable breeding ground for rare animals where nature has so much to offer. You'll have the great privilege of observing the famous lions featured in *Birth of a Pride*, the film directed by Derek and Beverley Joubert for National Geographic, as well as endangered African wild dogs, hippos bathing in the lagoons, and large herds of elephants grazing peacefully in the surrounding area. It is a magical show enriched by the most beautiful sunsets in the world.



Member Relais & Châteaux since 2013
Selinda Reserve
Selinda Reserve

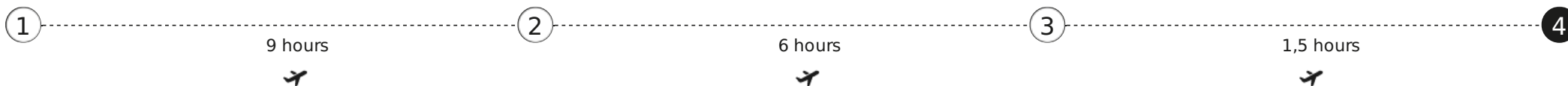
Close to the property

- A Photo Safari from your tent...
- Delving into the Selinda Reserve



A concierge is at your service:
+1 800 735 2478 *

*Price of a local call



4 OKAVANGO DELTA - BOTSWANA — 3 NIGHTS

(1 property available)

Duba Plains Camp

Lodge and restaurant in a private game reserve. Duba Plains Camp offers guests a setting unlike any other, featuring woodlands, islands and flood plains that shelter thousands of animals, including interesting Kalahari species that enthusiasts come from afar to admire. Located in the heart of the Okavango Delta, in a private 77,000-acre reserve, you will find 5 luxury tents and one 2-bedroom private suite designed to blend into the landscape while also evoking a style of the 1920s. Extremely comfortable and slightly elevated, each one offers private swimming pools, outdoor salas, stunning views over the plains and water channels that can also be explored by 4x4 with a private guide. Great Plains Conservation, the camp's owner, is the only operator on this concession, thus giving guests exclusive access to this wild paradise.



Member Relais & Châteaux since 2017
Duba Plains Private Reserve
Okavango Delta

Close to the property

- Close Encounters



A concierge is at your service:

+1 800 735 2478 *

*Price of a local call